

## 6000 Vibration Test System

Lansmont's Model 6000 Vibration Test System was designed for product testing requiring a lot of stroke. This increased stroke allows a great deal of versatility when performing low frequency, high energy vibration test profiles which are becoming more and more common due to the increased implementation of Field-to-Lab™ results in test protocols. The 6000 features a rugged hydraulic actuator designed specifically for today's testing profiles, a reliable hydraulic power supply, and Lansmont's extremely popular TouchTest vibration control system. Let Lansmont help you configure a Model 6000 vibration test system that will meet your demands today!



### 6000 Features:

- Extremely versatile, the 6000 can be configured with table sizes from 36 in. square (91.4 cm) to 60 in. square (152 cm). It has a piston stroke of 6 in. (15.2 cm) and handles payloads up to 3,000 lbs. (1,364 kg).
- Windows™ based vibration control system, including Lansmont's extremely powerful TouchTest Vibration software.
- Random vibration, swept-sine vibration, resonance search and dwell, repetitive bounce and powerful user-defined profiles all included.
- Fully integrated pump and servo controls, all designed and manufactured by the Lansmont Corporation.
- Field-to-Lab™ ready. Simple transfer of data from your Lansmont SAVER™ to your vibration controller for real-world random vibration tests.
- Full range of applications training programs available.
- Worldwide Customer Service department.



### Vibration Testing Benefits:

- Identify design and production defects.
- Increase product ruggedness.
- Reduce packaging costs.
- Eliminate shipping damage.

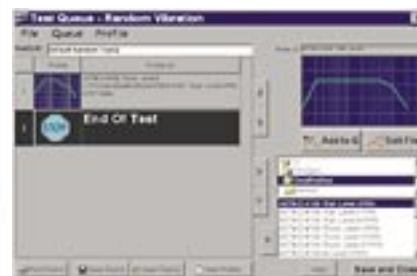
# 6000 Vibration Test System

## TECHNICAL SPECIFICATIONS

PHYSICAL	
Table Sizes	36 in. (91 cm) – 60 in. (152 cm)
Seismic Base Options	8,000 lbs. (3,629 kg) – 12,000 lbs. (5,443 kg)
PERFORMANCE	
Load Capacity, Maximum	2,000 lbs. (907 kg)
Load Capacity, Maximum (with optional 1-G Supports)	3,000 lbs. (1,361 kg) *(See Plaintiff Air)
Maximum Stroke (Peak-To-Peak)	6 In. (15.2 cm)
Frequency Range	3 – 100 Hz
Actuator Stall Force at 3,000 psi (207 bar)	7,394 lbs. (33 kN)
HYDRAULIC POWER SUPPLY	
Voltage	200 – 460 VAC
Frequency	50 – 60 Hz
Phase	Three Phase
HPS Motor Rating	20 HP
POWER REQUIREMENTS, CONTROL	
Voltage	100 – 220 VAC
Frequency	50 – 60 Hz
Phase	Single Phase
ENVIRONMENTAL	
Cooling Water	60 Degrees F at 6 Gal/Min. for Models 1800–5 – 10000 (15.5 Degrees C at 22.7 L/Min. for Models 1800–5 – 10000)
Plant Air (*)	100 psi (6.9 bar) for all Vibration Machines utilizing the 1-G Support option.

### TouchTest Vibration Controls:

- Available in either Bench-Top or Full "System Station" Configurations. Both Options have identical functionality; the System Station offers a convenient, stylish enclosure for controls.
- Extremely powerful, Windows™ based software.
- Reliable, fully-integrated pump/servo controls.
- Intuitive interface and full-featured help files make machine operation simple.
- Quick, easy data upload from Lansmont field data recorders makes Field-to-Lab™ simulations a snap.
- Easy sharing of data via e-mail, internet, and export to other popular programs such as Word™ and Excel™.



**Lansmont**  
Corporation